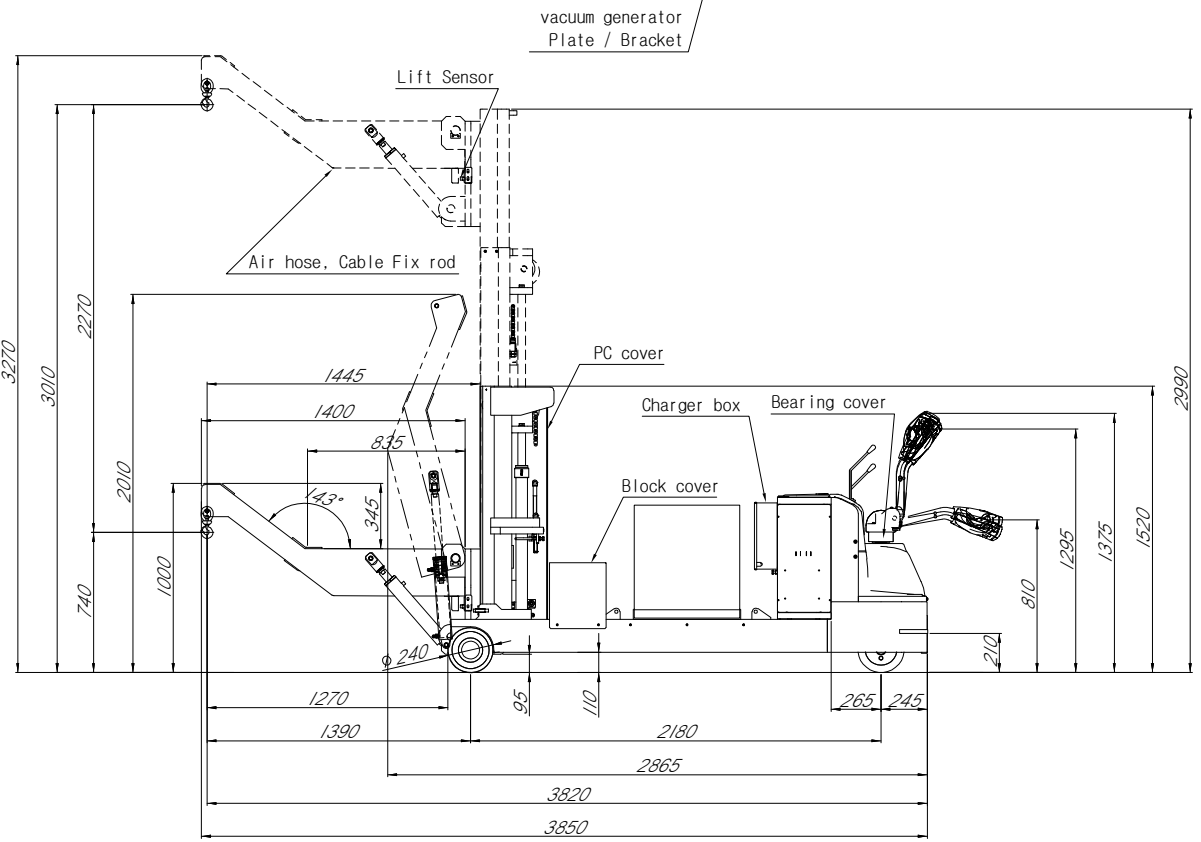
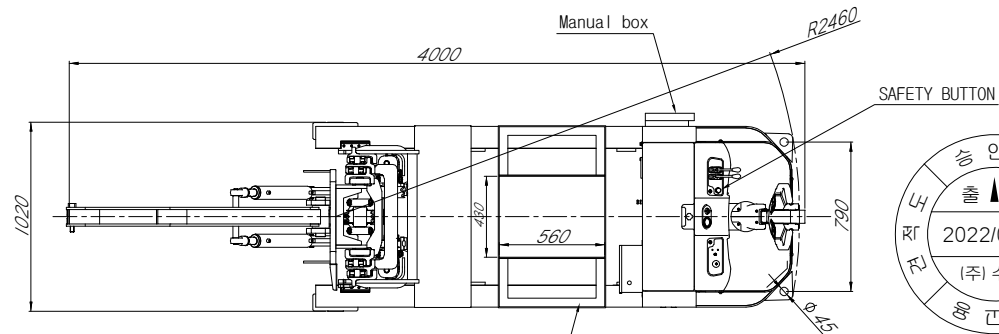


SPECIFICATIONS

| | | | |
|-------------------|-------------------------|-----|--------|
| MODEL | SWR-1300L AC/EPS | | |
| CAPACITY | 850 | KG | |
| SELF WEIGHT | 1900±1% *9.호BOX 80kg不含. | | |
| LIFTING HEIGHT | 740 - 3010 | MM | |
| LOAD CENTER | 1460 | | |
| TURNING RADIUS | 2460 | MM | |
| WHEEL BASE | 2180 | | |
| CLIMBING CAPACITY | 10 | % | |
| OVERALL LENGTH | 4000 | MM | |
| OVERALL HEIGHT | 1520 | | |
| OVERALL WIDTH | 1020 | | |
| CENTER CYLINDER | ø80x400 st | | |
| LIFT CYLINDER | ø45x735 st(2 EA) | | |
| TILT CYLINDER | ø60x290 st(1 EA) | | |
| LIFTING SPEED | EMPTY | 80 | MM/SEC |
| | LOADED | 55 | |
| TRAVEL SPEED | FAST | 2.6 | KM/H |
| | SLOW | 1.4 | |
| DRIVE MOTOR | AC 16Vx1.5Kw | | |
| HYDRAULIC MOTOR | 24Vx2.2Kw | | |
| EPS MOTOR | 24Vx0.4Kw | | |
| BATTERY | 24Vx268 AH/5Hr | | |
| BATTERY CHARGER | AC 1øx100V 60Hz / 50Hz | | |
| COLOR | 오렌지 (ORANGE) | | |

※NOTE

- 1.使用荷重 : 850kg
- 2.上昇高さ : 3010mm(フック先端基準)
- 3.輪荷重 (許容誤差範囲±3%) 但し、9項BOX 搭載条件。
 -負荷無しの場合 : 前輪 522kg / 1個 , 後輪 936kg / 1個
 -負荷700kgの場合 : 前輪 1101kg / 1個 , 後輪 478kg / 1個
 -負荷800kgの場合 : 前輪 1183kg / 1個 , 後輪 414kg / 1個
 -負荷850kgの場合 : 前輪 1224kg / 1個 , 後輪 382kg / 1個
- 4.EMERGENCY S/W : LED TYPE(RED)
- 5.ハンドル操作 : 電動パワステ
- 6.FRONT WHEEL ø240
- 7.FOLDING HOOK (Tilt cylinder 2ea)
- 8.最低地上高 100mm
- 9.項 バキューム制御 & 電源 BOX 2sets
 total 80kg 搭載。(脱着式)
- 10.インターロック機能 :
 1) 「SAFTY:Free/Lock」 select s/w 「Free」時のみ
 「リフト昇降」「アーム折畳み」の各レバー操作が有効。
 2) アーム折畳み動作はリフト最下端時のみ有効。
 3) 上昇動作はアームを倒した状態でのみ可能。



| | | | | | | | | | | | | | | | | | | | | | | | | |
|---|----------|---------|------|--------|----------|---------|----------|---------|----------------------------------|------------------------------------|--------------------------------|-------|------------|------------------------------|---------------|------------|----------------|-----|---------------|-----|----------------|-----|------------------|-------------------------------------|
| A | REVISION | ISS NO. | DATE | REASON | DESIGNED | CHECKED | APPROVED | REMARKS | 제관용품의 일반공차 Welding Tolerances | 절삭기공의 일반공차 Machining Tolerances | 3각법 3RD ANGLE PROJECTION | AMKO® | 품명 NAME | SWR-1300L AC/EPS ASSEMBLY | | | | | | | | | | |
| | | 1 | | | | | | | Dimension | TOL | 단위 UNIT | | | mm | 제도 DRAWN | USH | 설계 DESIGNED | USH | 검도 CHECKED | LSM | 승인 APPROVED | LSM | TITLE OF PROJECT | ELECTRIC FORKLIFT TRUCK -SWR-1300L- |
| | | 2 | | | | | | | Dimension | TOL | SCALE | | | 1/10 | 도면번호 SHEET | UE00100100 | 1/1 | | | | | | | |

ALC-850